



Hello Neighbors!

We hope you had a good week.

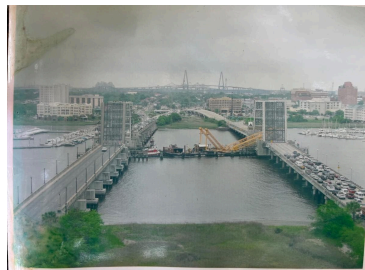
Here is what we have on deck this upcoming weekend at the shipyard:

- Our shipyard will be closed this weekend, Saturday (09/27) and Sunday (09/28), with regular monitoring of site conditions and weather forecasts throughout the closure.

We value open communication and encourage you to reach out with any questions. Please save this email address and feel free to contact us at (**community@stevens-towing.com**).

Please see below for a highlight of an old photo of Stevens Towing history.

With gratitude,  
Johnson Stevens and the Stevens Towing Team



Featured on the left is a historic photo of Stevens Towing's heavy lift crane carefully maneuvering through the iconic Ashley River bridges. This image captures a proud moment in our company's long-standing tradition of marine service along the Charleston waterways, highlighting both our operational skill and deep local roots!

Stevens Towing Company, Inc. | [4170 Highway 165](#) | [Yonges Island, SC 29449 US](#)

[Unsubscribe](#) | [Update Profile](#) | [Constant Contact Data Notice](#)