

Keel Holdings, LLC “Keel Expansion Project” Update

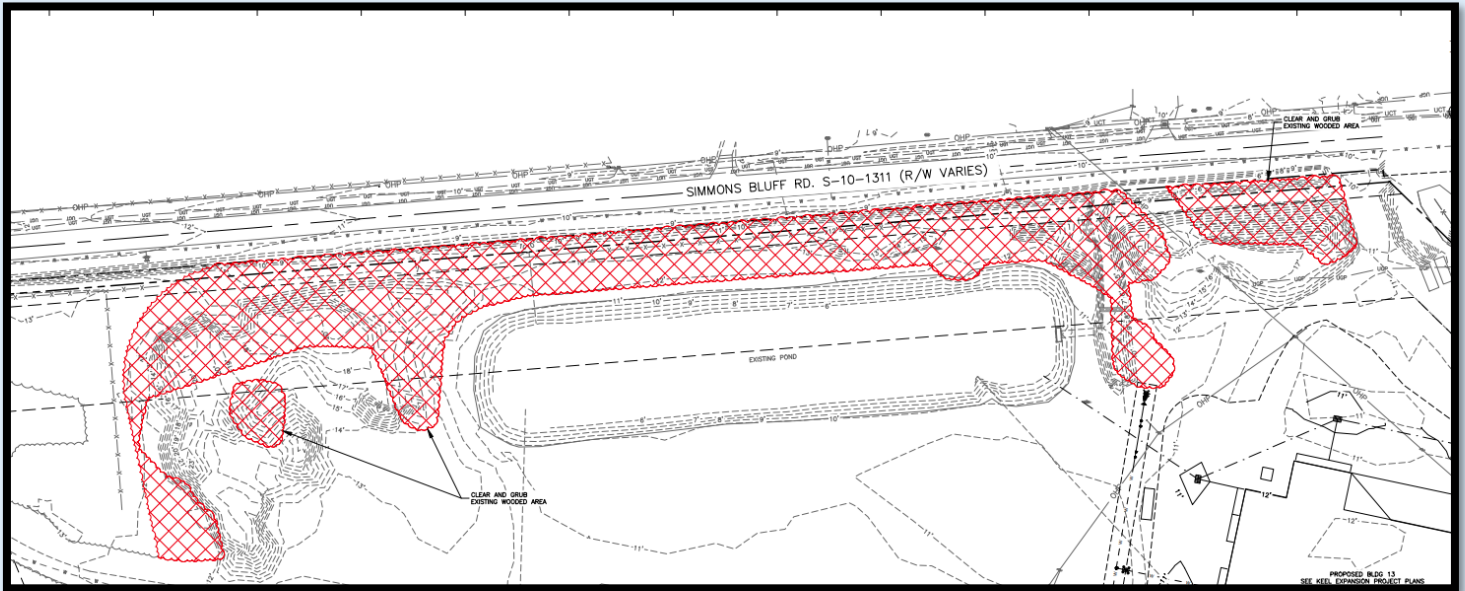
LAST WEEK

Keel started site preparation for the BERM and FENCE

Contractors remove trees and underbrush along Simmons Bluff Road.

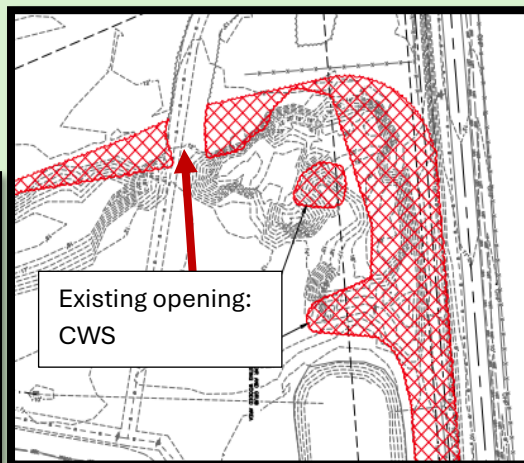
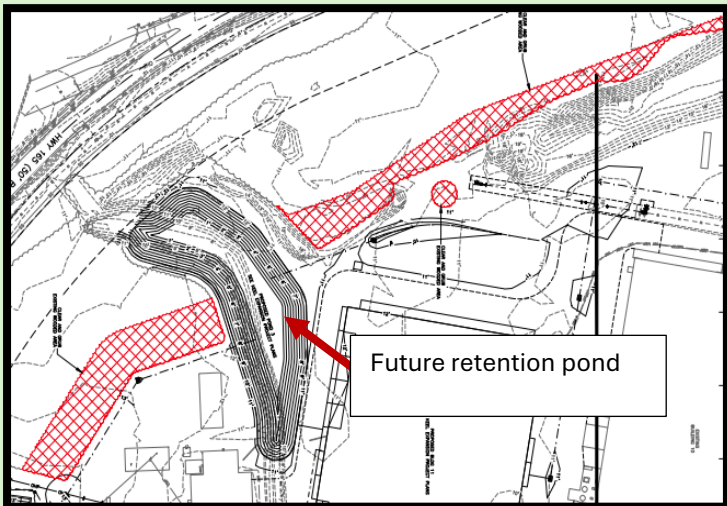
The red in the image below is the approved area of disturbance for the placement of the berm and fence.

As a reminder the berm and fence will each be 8' in height, resulting in a combined height of 16' matching the berm/fence previously constructed by Stevens Towing along Simmons Bluff Road.



THIS WEEK

Keel continues to prepare the site moving onto areas along Highway 165. The images below show the approved areas of disturbance Keel will be clearing.



Coming Soon

The Meggett website will launch a Community Page to include the current and upcoming stages of the Keel Expansion Project, contact forms, and shift times.